

# Figures



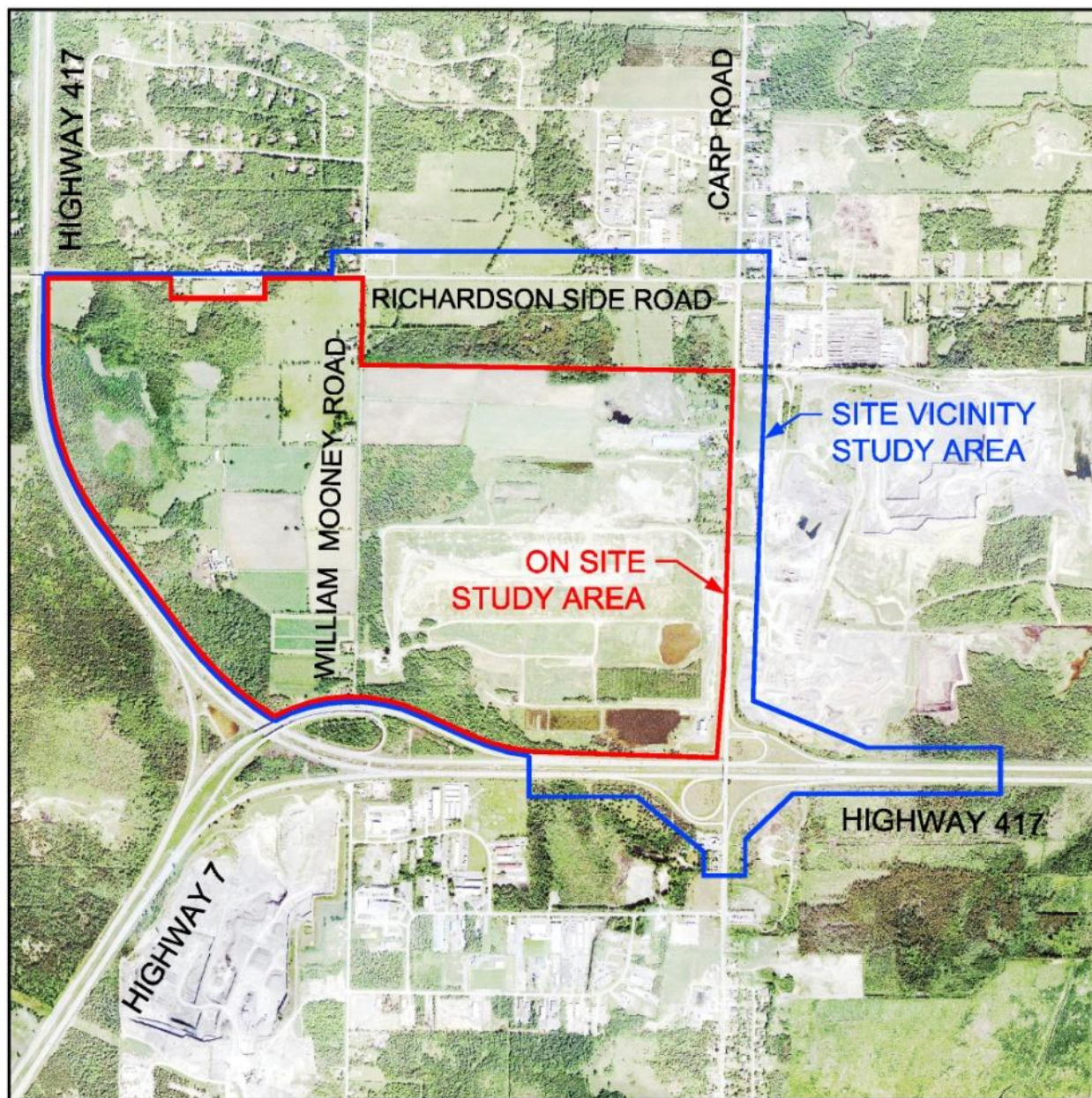
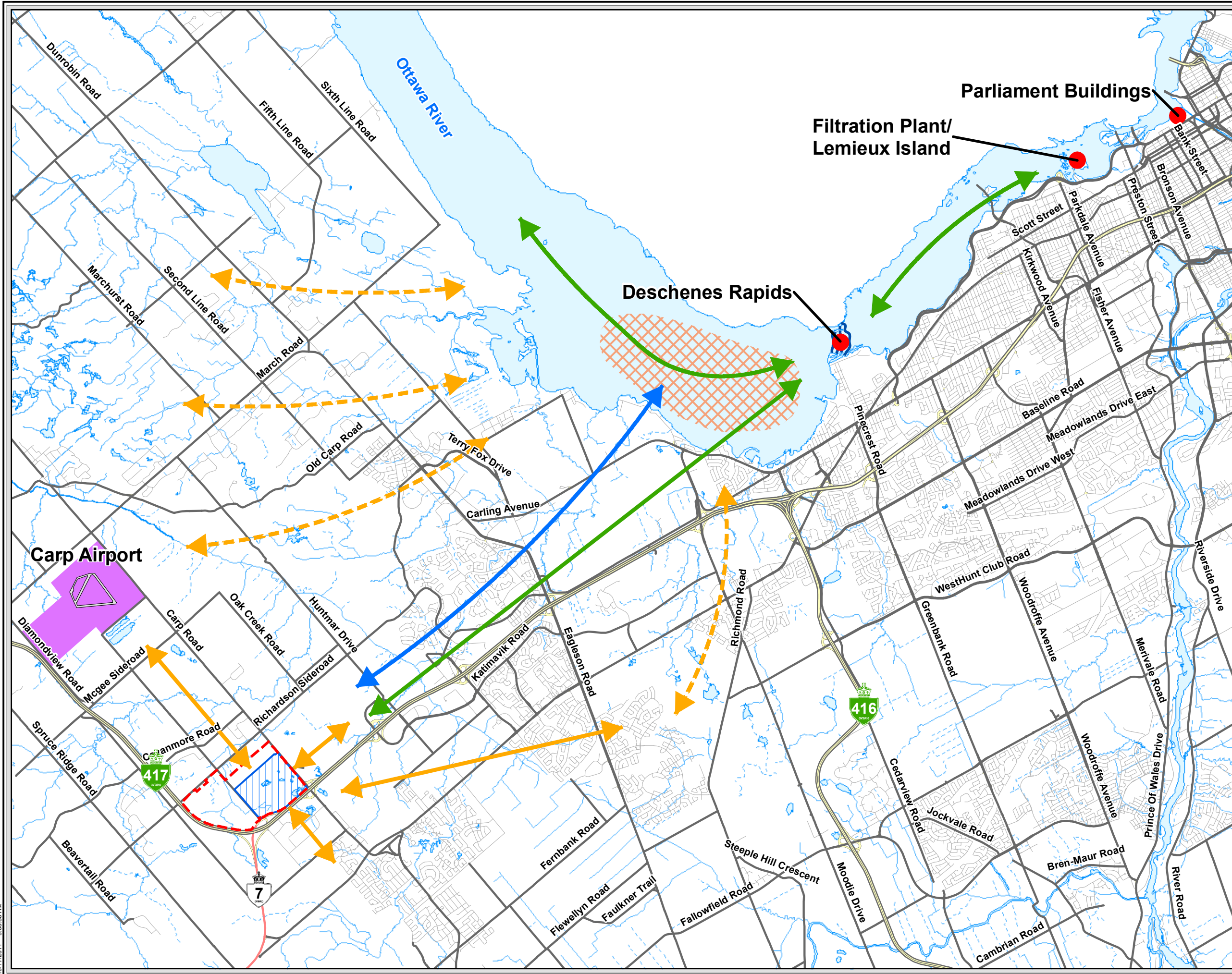


Figure 1. Study Areas for Effects from Truck Transportation Along Access Roads



Map Document: (P:\60191228\000-CADD\050 GIS\WIP\MXDs\Working\MXDs\60191228\GullMovements.mxd)  
10/17/2011 - 9:33:58 AM



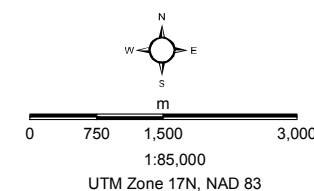
#### Legend

- Gull Nesting Colony
- Deschenes Rapids
- ▨ Gull Night Roost
- Waterbody
- Carp Airport Property
- Subject Site: On-site Study Area
- Existing WM Operations

#### Gull Movement

- - -> Spring & Fall (Inferred)
- > Spring & Fall (Observed)
- > Summer (Observed)
- > All Year (Observed)

Basemapping from Ontario Ministry of Natural Resources  
Orthophotography:



This drawing has been prepared for the use of AECOM's client and may not be used, reproduced or relied upon by third parties, except as agreed by AECOM and its client, as required by law or for use by governmental reviewing agencies. AECOM accepts no responsibility, and denies any liability whatsoever, to any party that modifies this drawing without AECOM's express written consent.

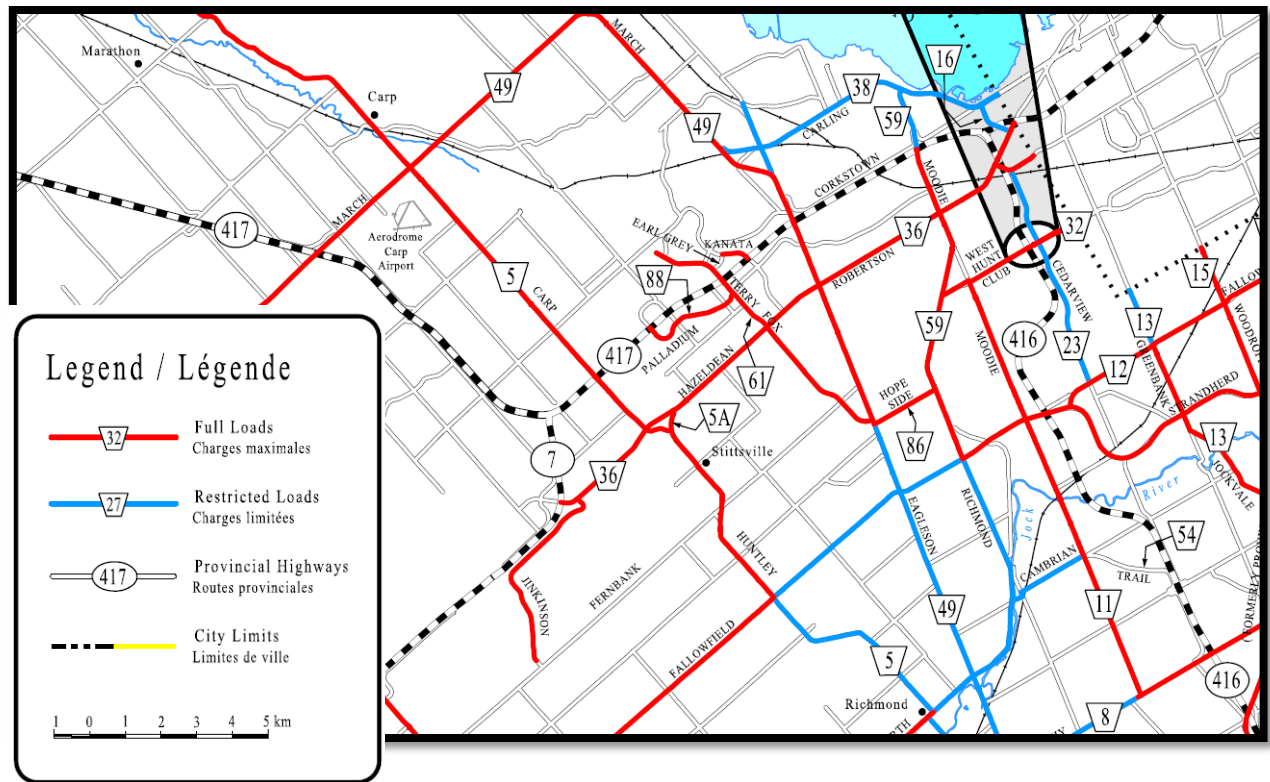
Ottawa Waste Management Facility

#### Gull Movement

October 2011  
Project 60191228

**AECOM**

Figure 2



**Figure 3. City of Ottawa 2011 Rural Truck Route Map Excerpt**



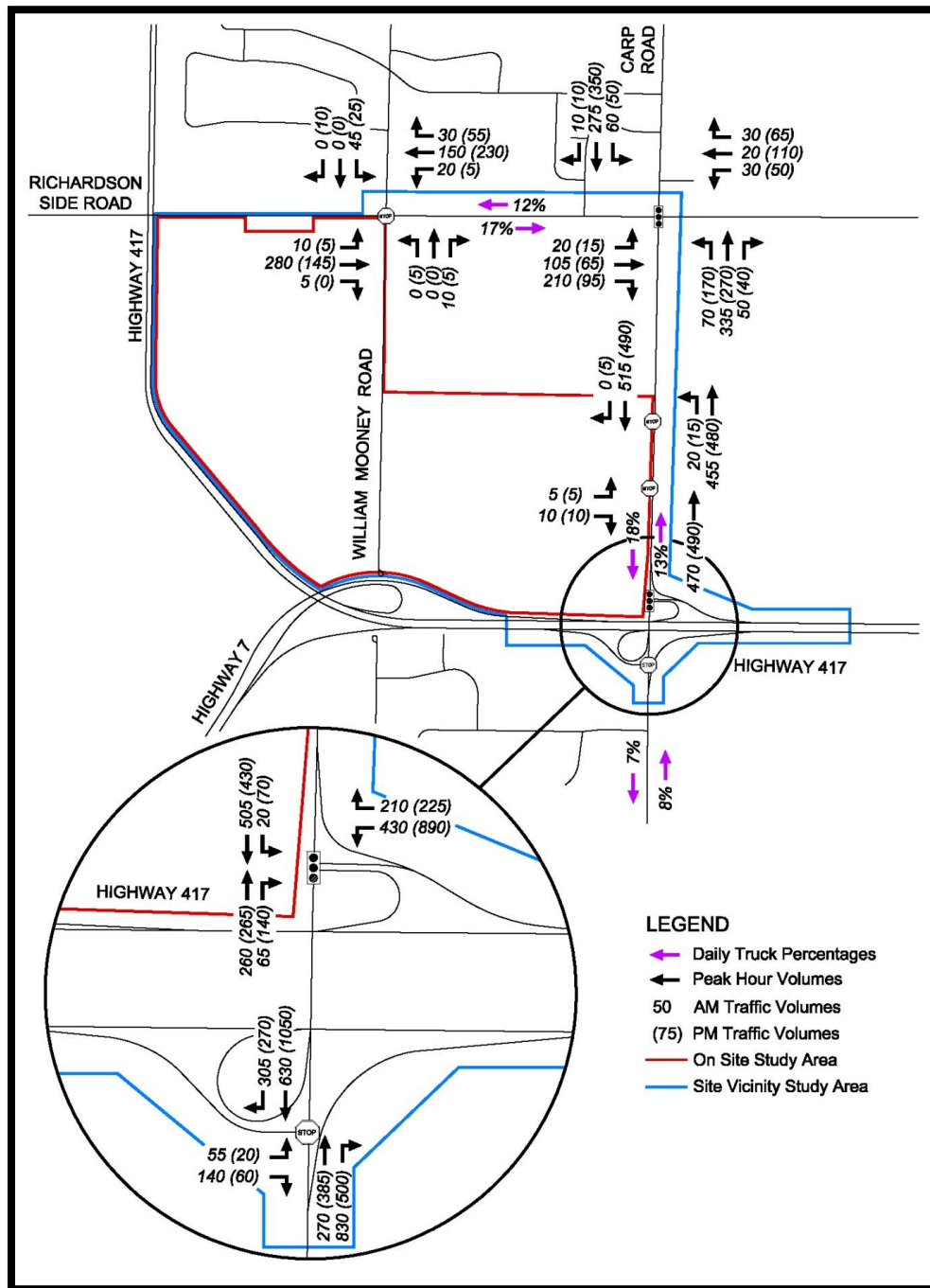
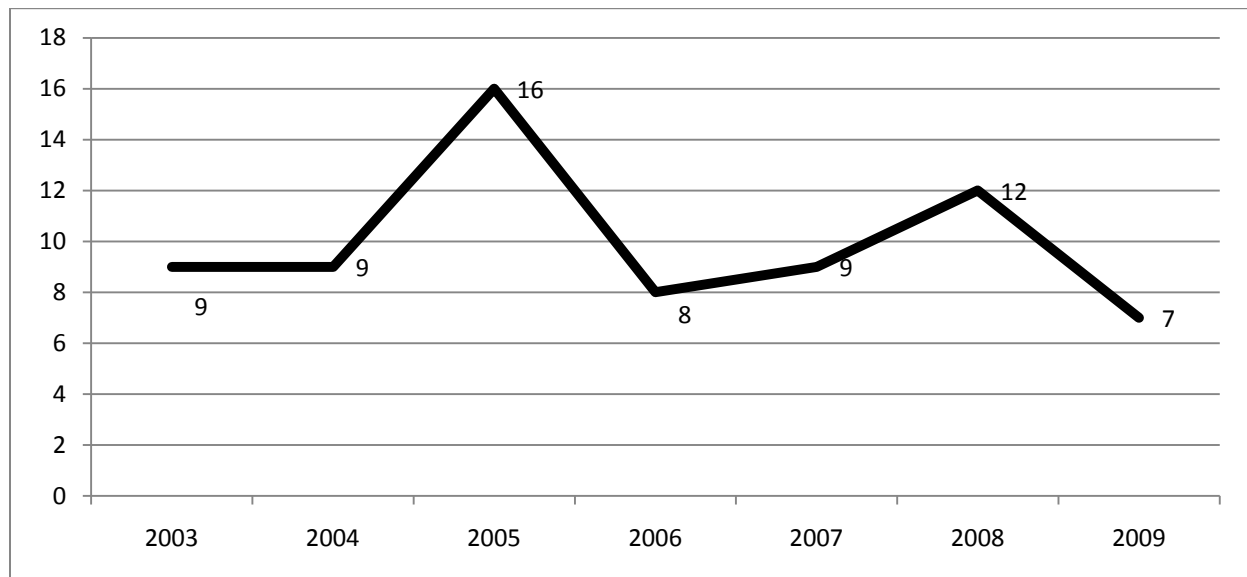
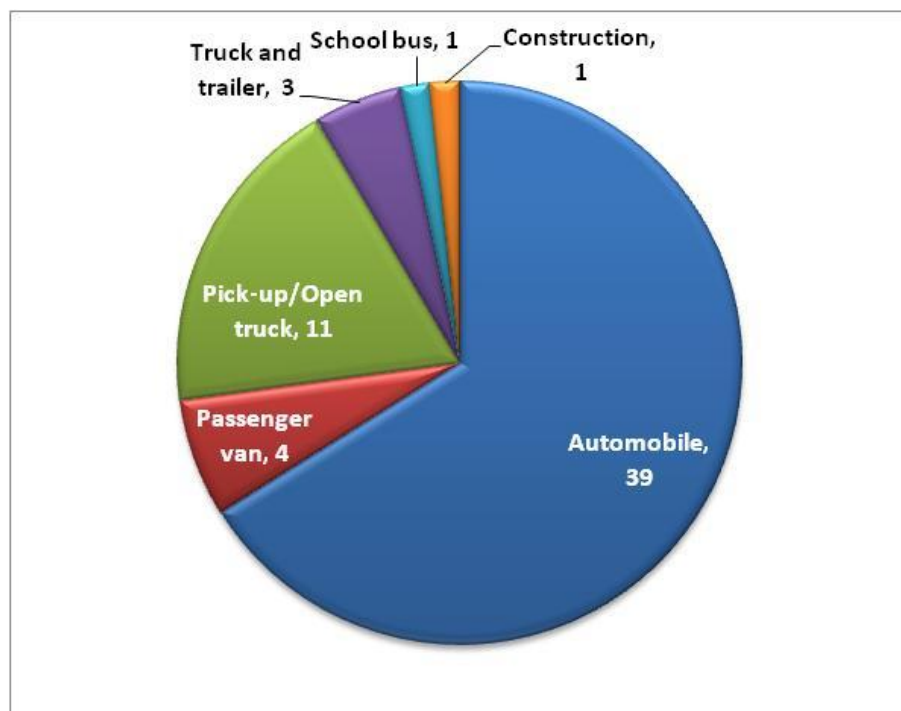


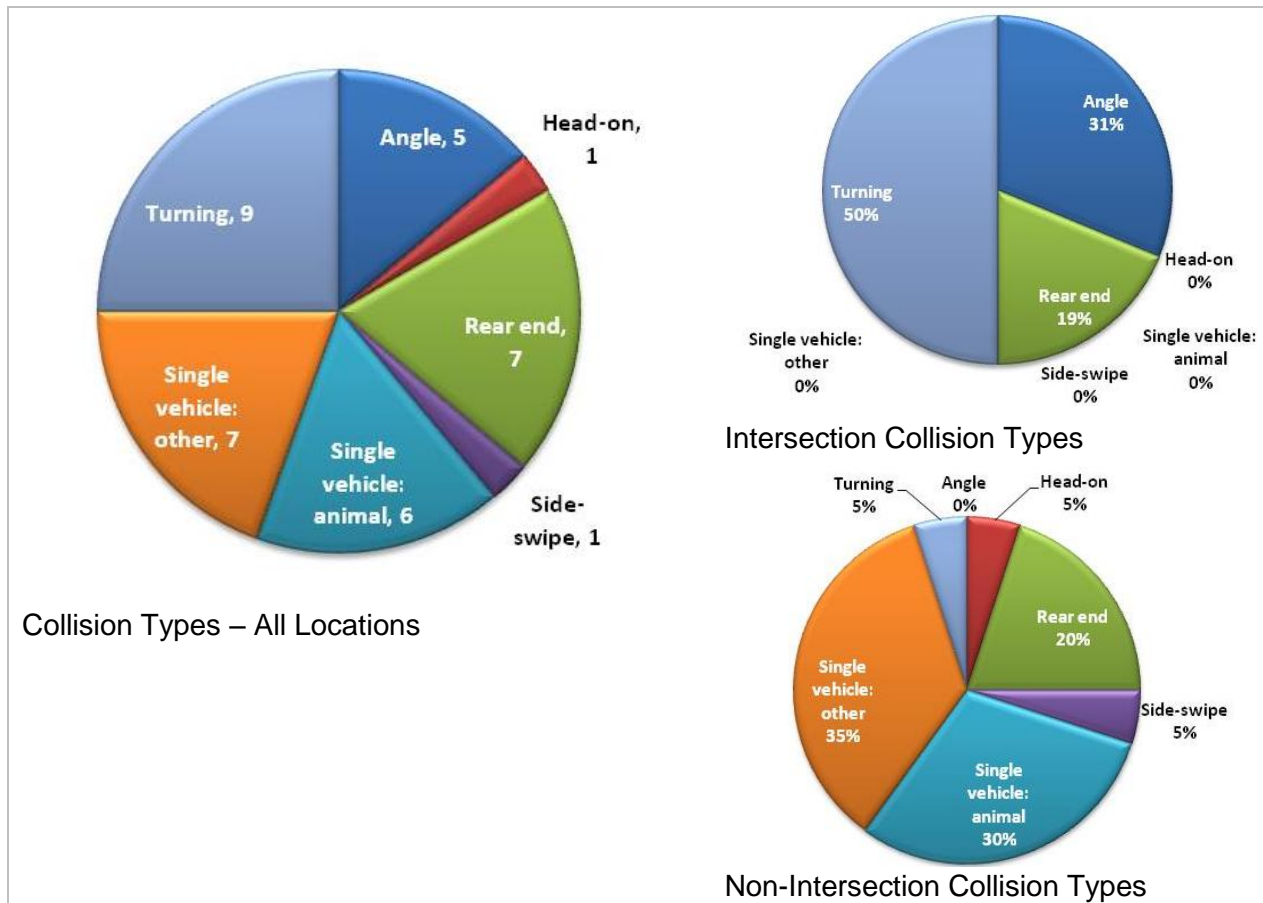
Figure 4. Balanced 2011 Traffic Volumes



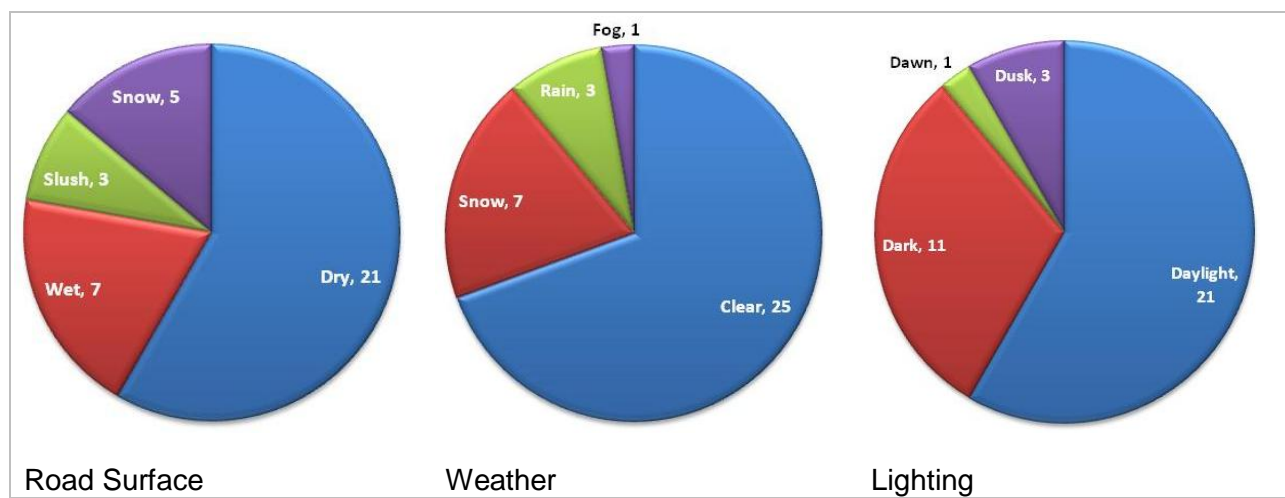
**Figure 5. Yearly Collisions in Study Area**



**Figure 6. Vehicle Type**



**Figure 7. Collision Types**



**Figure 8. Environmental Conditions**