

Figure 6. Stream Temperatures for July 2006

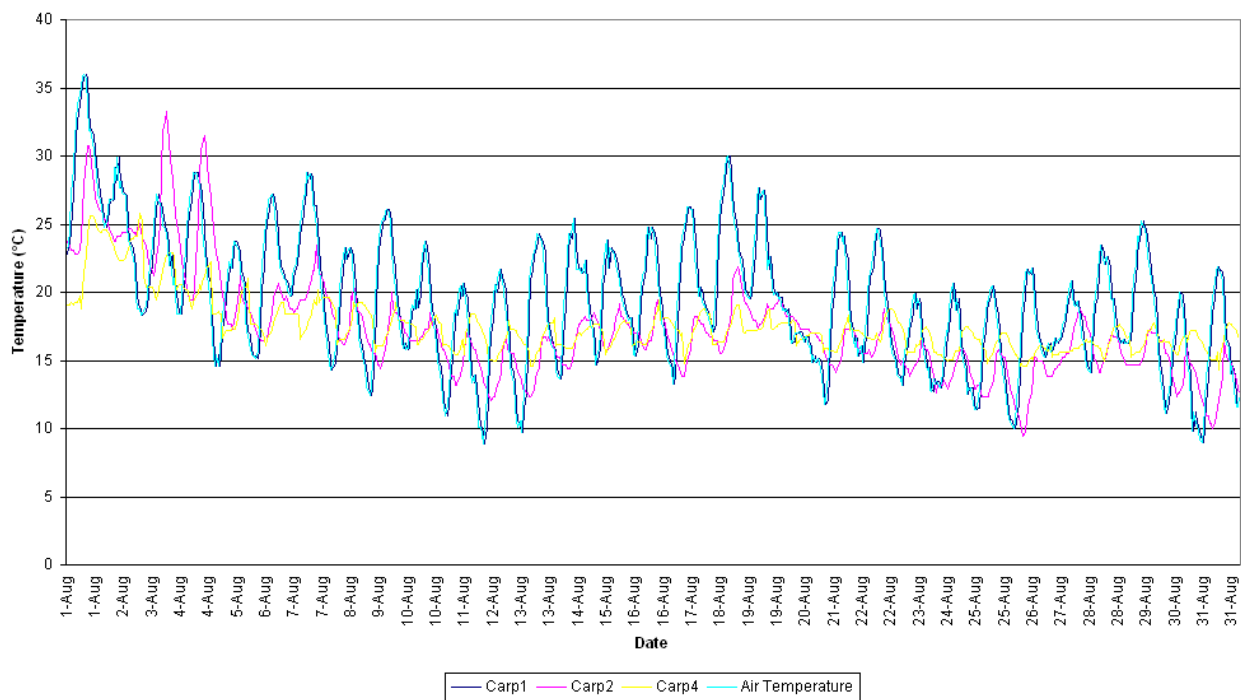


Figure 7. Stream Temperatures for August 2006

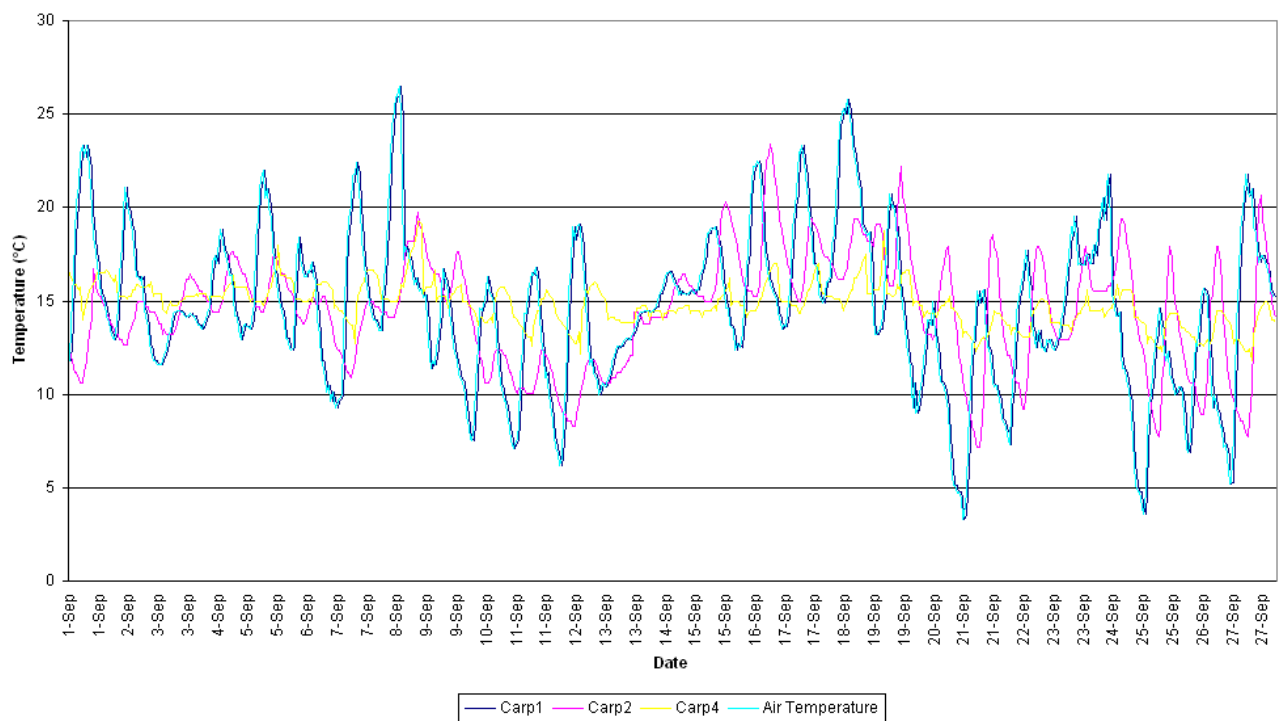
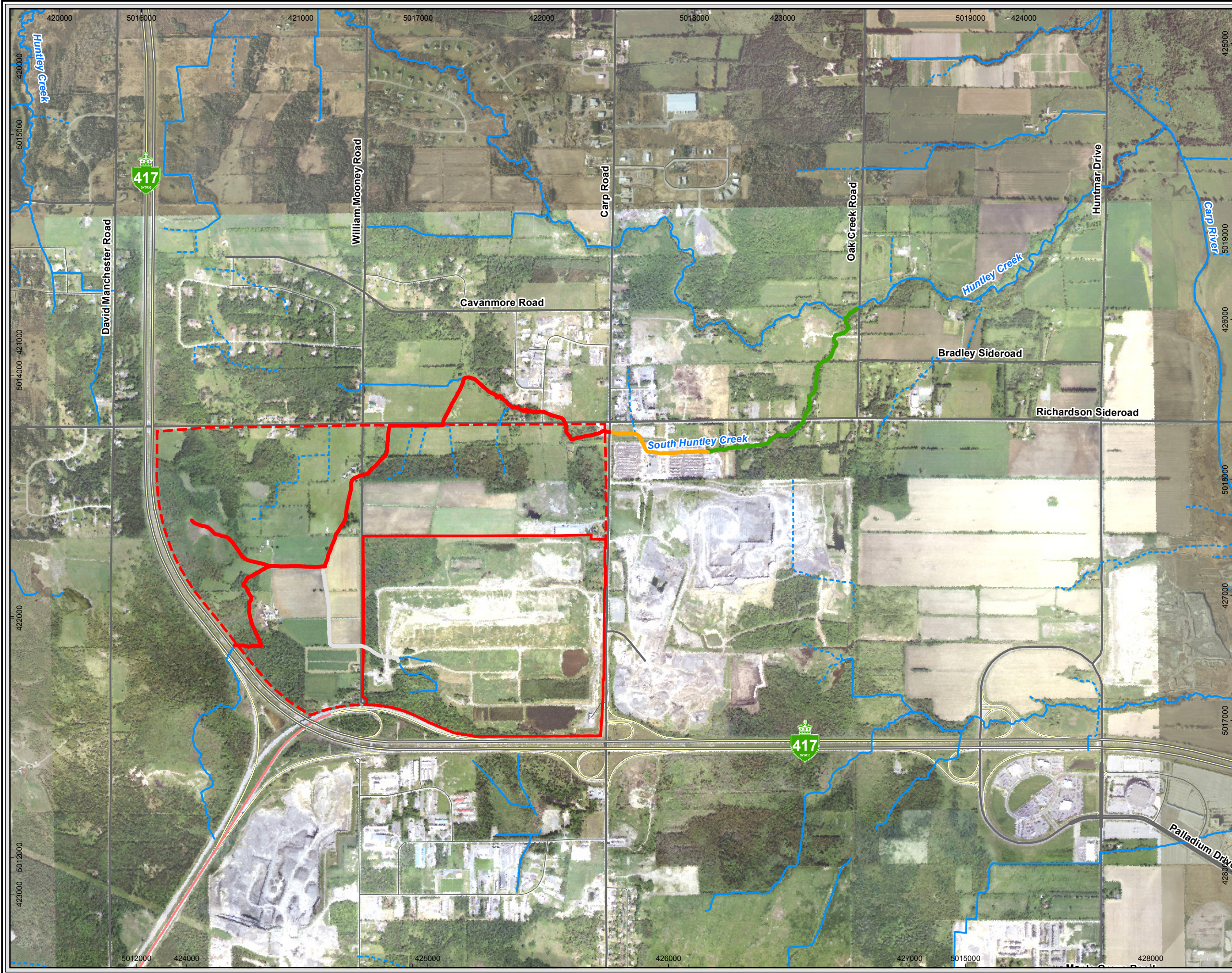


Figure 8. Stream Temperatures for September 2006



Legend

- On-site Study Area
- Current Ottawa WMF Operations
- Intermittent Stream
- Permanent Stream

Fisheries Habitat Classification

- Good
- Moderate
- Poor
- None

Basemapping from Ontario Ministry of Natural Resources
Orthophotography: 2005, 2008 and 2010

0 150 300 600
m
1:20,000
UTM Zone 17N, NAD 83

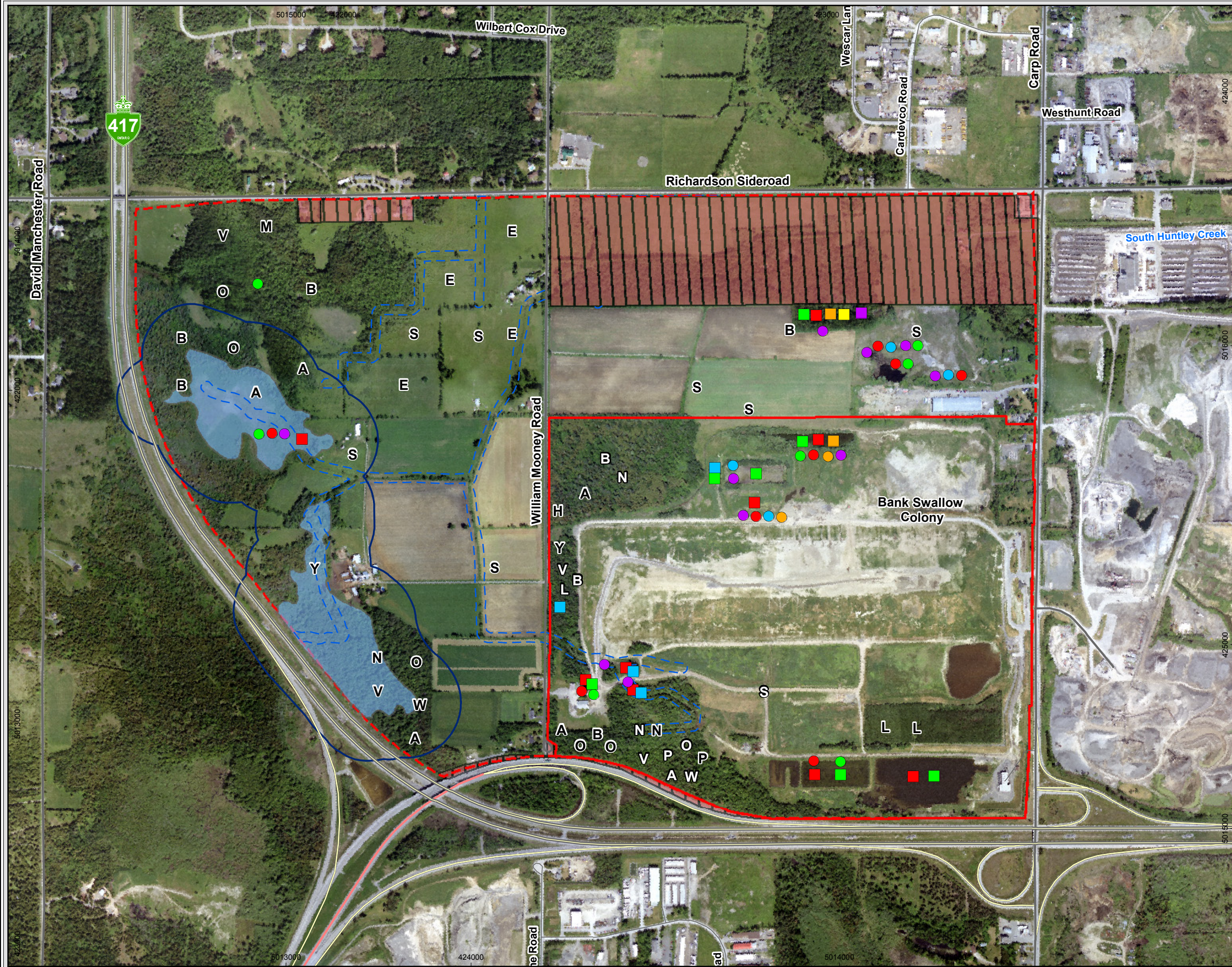
This drawing has been prepared for the use of AECOM's client and may not be used, reproduced or relied upon by third parties, except as agreed by AECOM and its client, as required by law or for use by governmental reviewing agencies. AECOM accepts no responsibility, and denies any liability whatsoever, to any party that modifies this drawing without AECOM's express written consent.

Waste Management of Canada Corporation
West Carleton Environmental Centre

Fish Habitat Classification

November 2011
Project 60191228

Figure 9



Legend

- On-site Study Area
- Current Ottawa WMF Operations
- Lands Not Owned/Optioned by WM
- Provincially Significant Wetland (PSW)
- PSW Buffer Area (120 m)
- Watercourse Buffer Area (15 m)

Area Sensitive Bird Species Observed

2006	Year	2011
A	American Redstart	A
B	Black and White Warbler	B
E	Eastern Meadowlark	E
H	Hairy Woodpecker	H
L	Least Flycatcher	L
M	Magnolia Warbler	M
N	Northern Waterthrush	N
O	Ovenbird	O
P	Pileated Woodpecker	P
S	Savannah Sparrow	S
V	Veery	V
W	White-breasted Nuthatch	W
Y	Yellow-bellied Sapsucker	Y

Amphibians Observed

2006	2011
Blue square	American Toad
Green square	Green Frog
Red square	Grey Treefrog
Orange square	Northern Leopard Frog
Purple square	Spring Peeper
Yellow square	Wood Frog

Basemapping from Ontario Ministry of Natural Resources
Orthophotography: 2005, and 2010

0 50 100 200 300 400
m
1:10,000
UTM Zone 17N, NAD 83

This drawing has been prepared for the use of AECOM's client and may not be used, reproduced or relied upon by third parties, except as agreed by AECOM and its client, as required by law or for use by governmental reviewing agencies. AECOM accepts no responsibility, and denies any liability whatsoever, to any party that modifies this drawing without AECOM's express written consent.

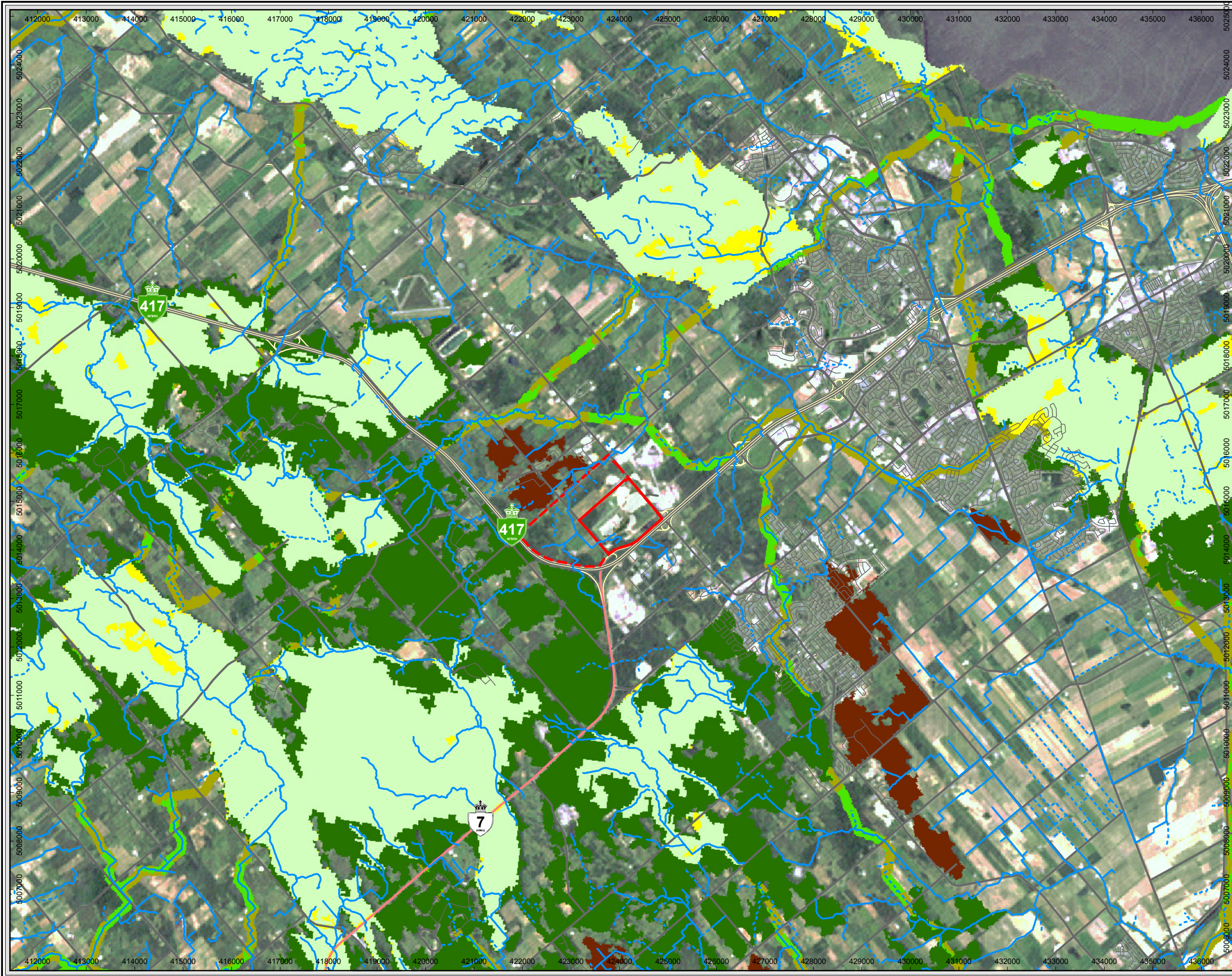
Waste Management of Canada Corporation
West Carleton Environmental Centre

Wildlife and Aquatic Features

November 2011
Project 60191228

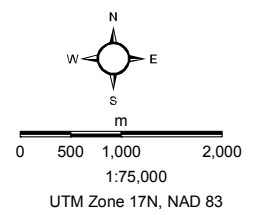
AECOM

Figure 11



- Legend**
- On-site Study Area
 - Current Ottawa WMF Operations
 - Intermittent Stream
 - Permanent Stream
 - Potential Core Areas
 - Potential Natural Corridor
 - Core Areas
 - Natural Corridors
 - Adjacent Natural Areas
 - Isolated Core Area

Basemapping from Ontario Ministry of Natural Resources



This drawing has been prepared for the use of AECOM's client and may not be used, reproduced or relied upon by third parties, except as agreed by AECOM and its client, as required by law or for use by governmental reviewing agencies. AECOM accepts no responsibility, and denies any liability whatsoever, to any party that modifies this drawing without AECOM's express written consent.

Waste Management of Canada Corporation
West Carleton Environmental Centre

Landscape Context

November 2011
Project 60191228

AECOM

Figure 12