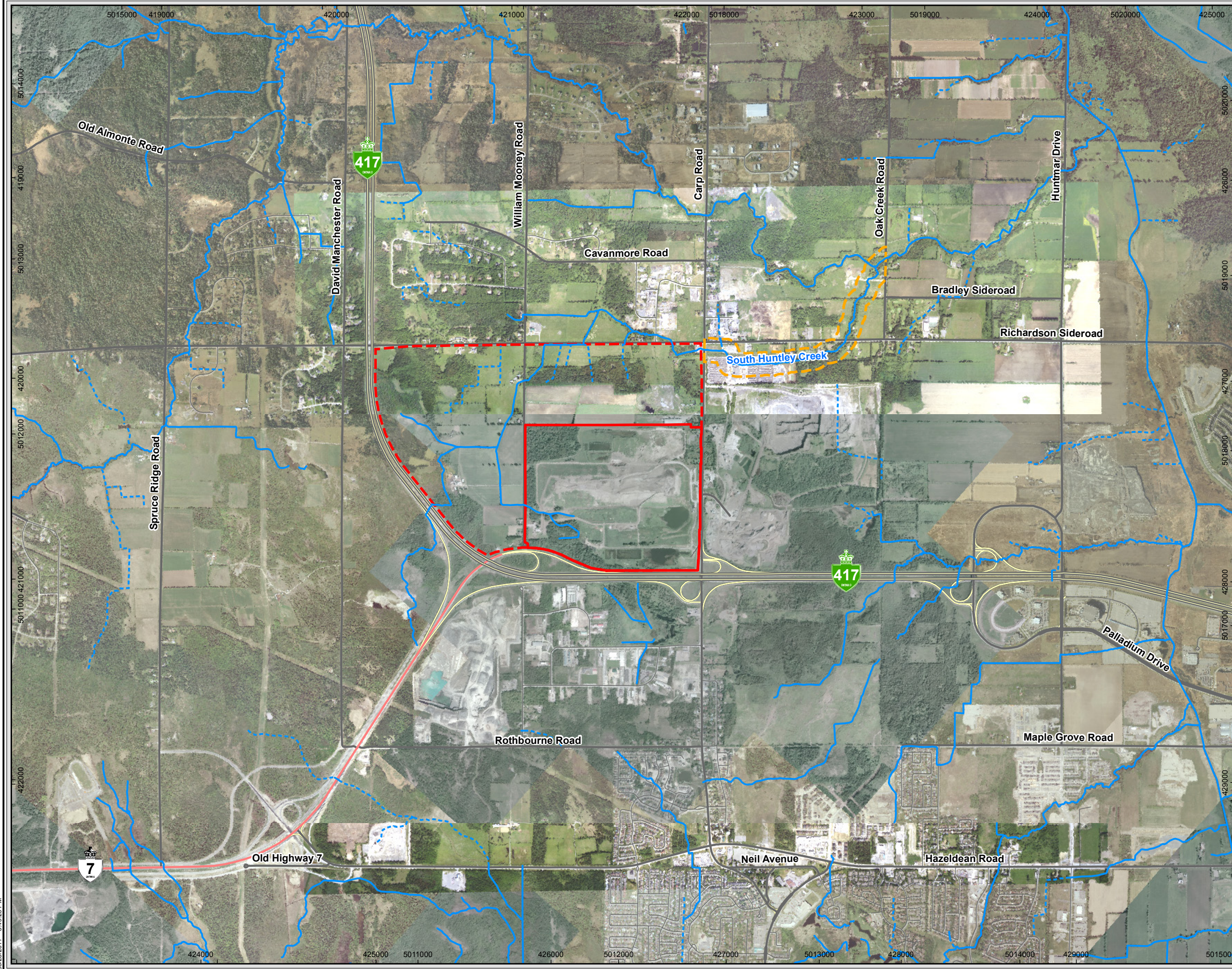


Figures





Legend

- On-site Study Area
- Current Ottawa WMF Operations
- Off-site Fish Habitat Study Area

Basemapping from Ontario Ministry of Natural Resources
Orthophotography: 2005, 2008 and 2010

Scale: 0 250 500 1,000 m
1:27,500
UTM Zone 17N, NAD 83

This drawing has been prepared for the use of AECOM's client and may not be used, reproduced or relied upon by third parties, except as agreed by AECOM and its client, as required by law or for use by governmental reviewing agencies. AECOM accepts no responsibility, and denies any liability whatsoever, to any party that modifies this drawing without AECOM's express written consent.

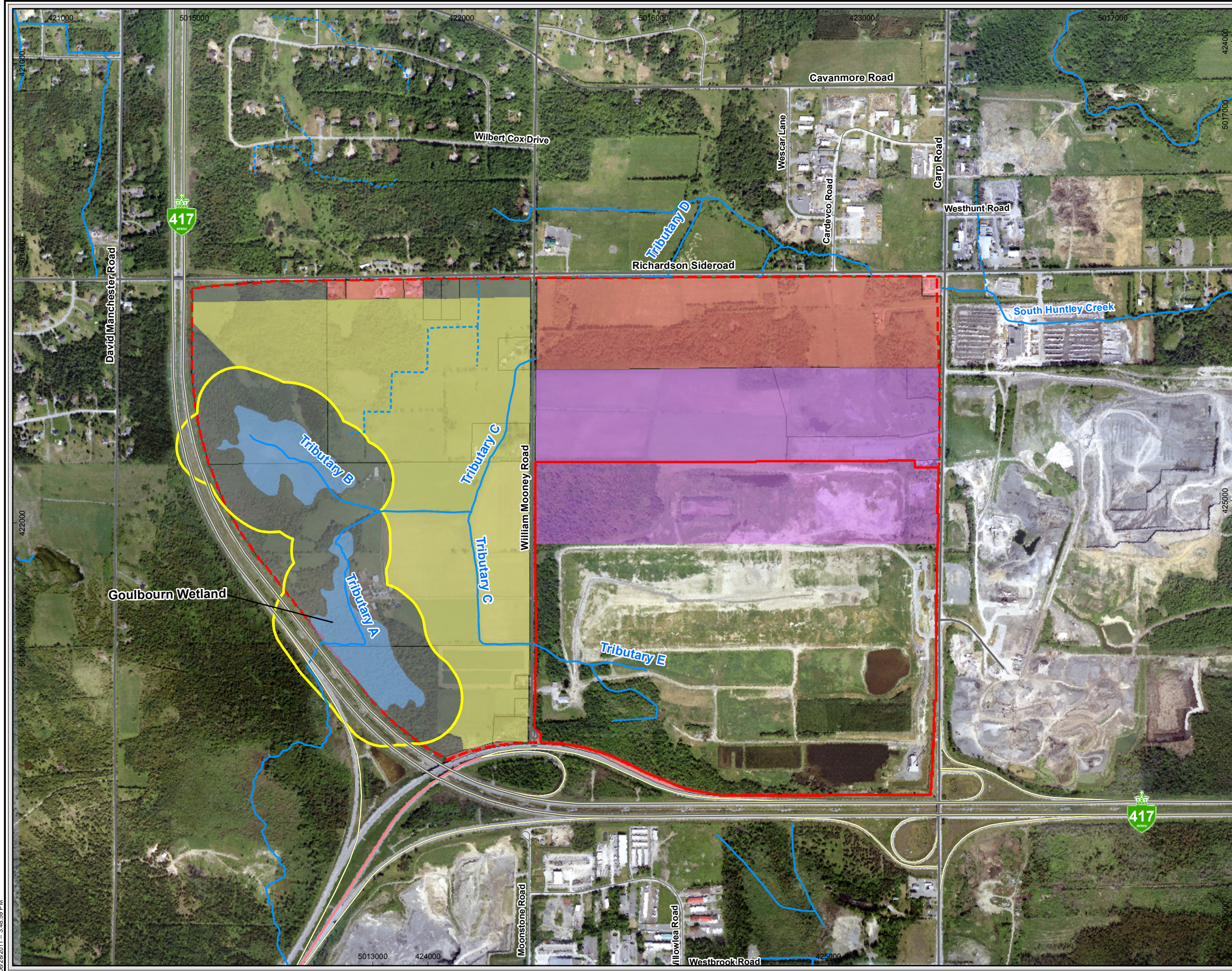
Waste Management of Canada Corporation
West Carleton Environmental Centre

Study Area

June 2011
Project 60191228

AECOM

Figure 1



Legend

- Intermittent Stream
- Permanent Stream
- PSW Buffer Area (120 m)
- PSW
- Lands Owned/Optioned by WM
- Lands Not Owned/Optioned by WM
- On-site Study Area
- Current Ottawa WMF Operations
- West Footprint Envelope
- North Footprint Envelope

Basemapping from Ontario Ministry of Natural Resources
Orthophotography: 2005, and 2010

0 100 200 400
m
1:12,000
UTM Zone 17N, NAD 83

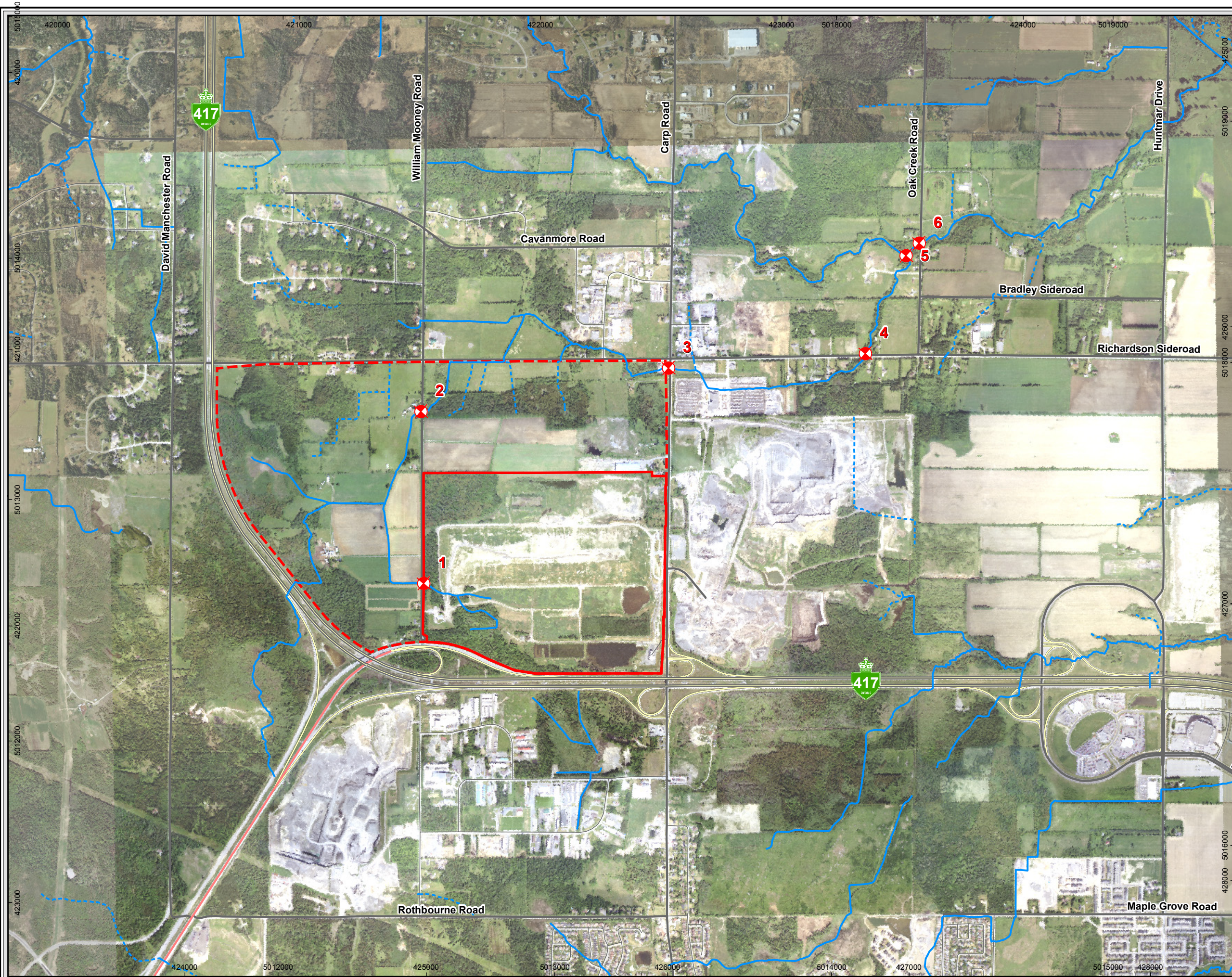
©2009 AECOM Canada Ltd. All Rights Reserved.
This document is protected by copyright law and may not be used, reproduced or modified in any manner or for any purpose except with the written permission of AECOM Canada Ltd. ("AECOM") or a party to which its copyright has been assigned. AECOM accepts no responsibility, and denies any liability whatsoever, to any party that uses, reproduces, modifies, or relies on this document without AECOM's express written consent.

Waste Management of Canada Corporation
West Carleton Environmental Centre

Watercourses Within Study Area

June 2011
Project 60191228

Figure 2



Legend

- On-site Study Area
- Current Ottawa WMF Operations
- Monitoring Stations
- Intermittent Stream
- Permanent Stream

Basemapping from Ontario Ministry of Natural Resources
Orthophotography: 2005, 2008 and 2010

0 150 300 600
m
1:20,000
UTM Zone 17N, NAD 83

This drawing has been prepared for the use of AECOM's client and may not be used, reproduced or relied upon by third parties, except as agreed by AECOM and its client, as required by law or for use by governmental reviewing agencies. AECOM accepts no responsibility, and denies any liability whatsoever, to any party that modifies this drawing without AECOM's express written consent.

Waste Management of Canada Corporation
West Carleton Environmental Centre

Monitoring Stations

June 2011
Project 60191228

Figure 3

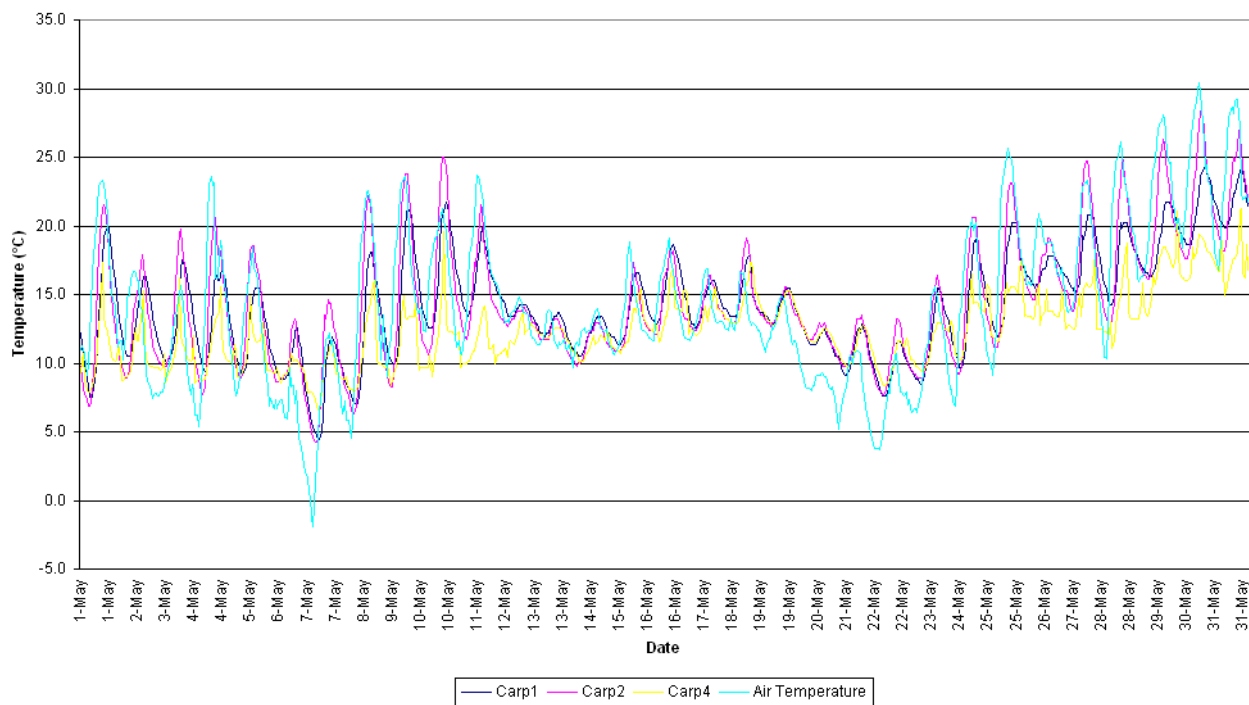


Figure 4. Stream Temperatures for May 2006

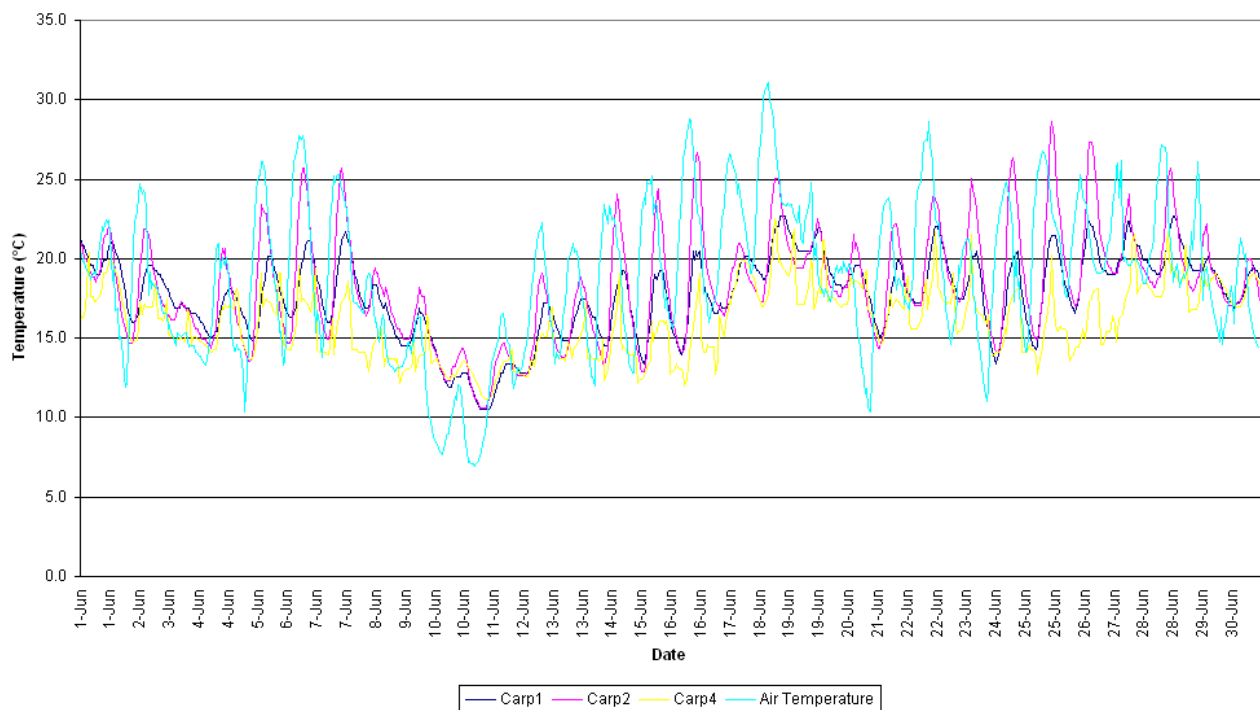


Figure 5. Stream Temperatures for June 2006