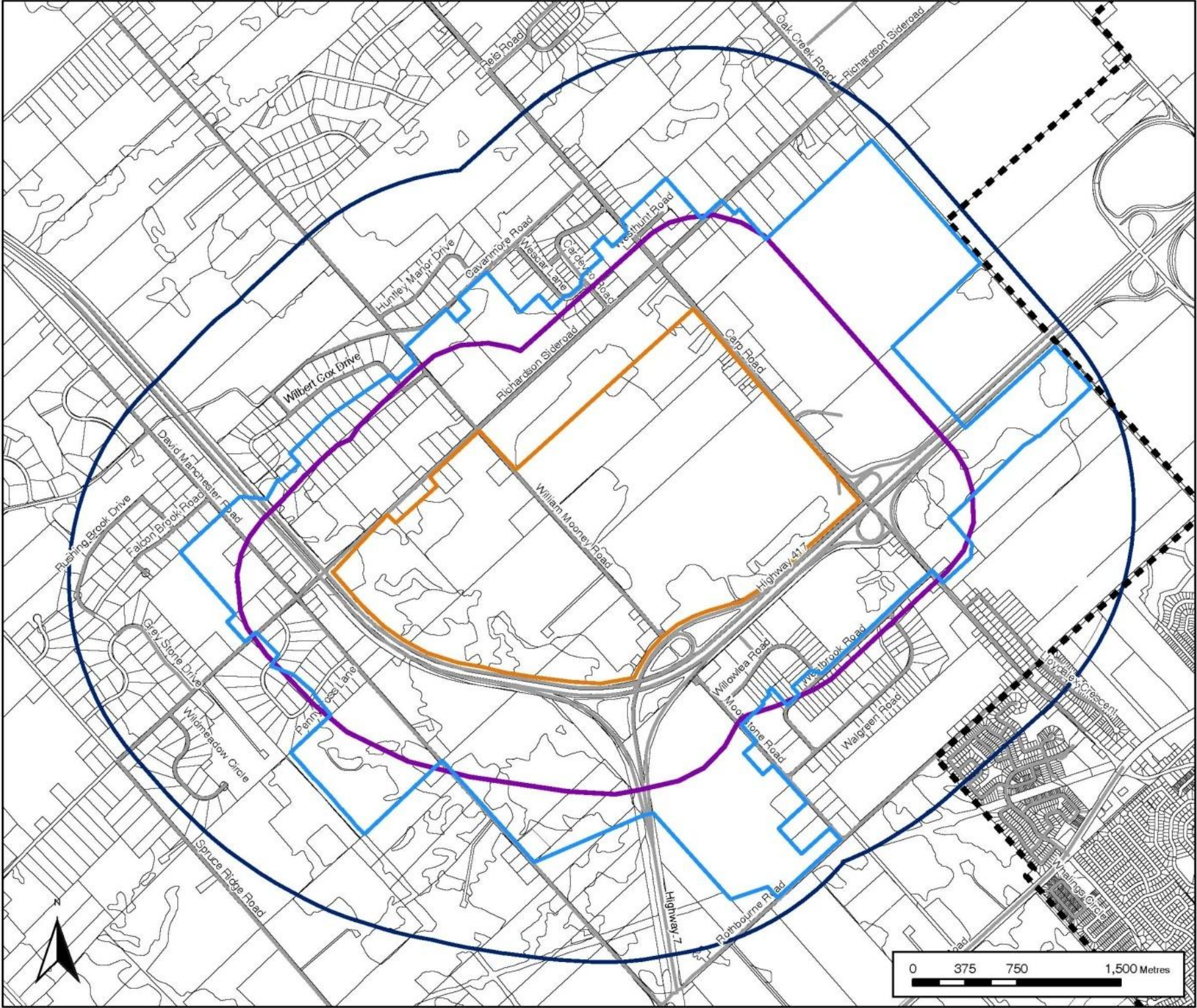


# Figures



**Figure 1**  
**Land Use Study Areas**

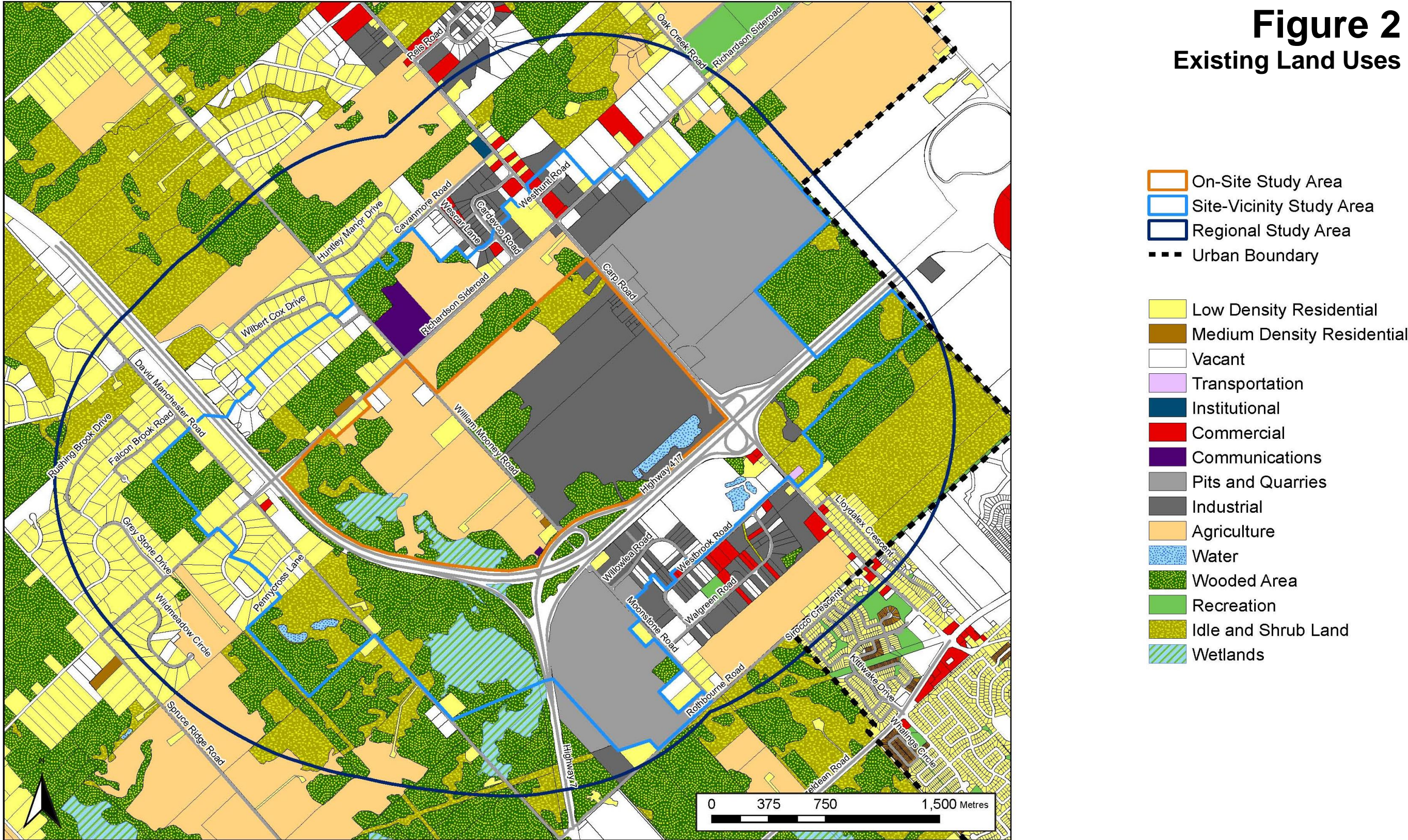


Property Parcel data by Teranet, 2005, updated by FoTenn Consultants, March 2011



# Figure 2

## Existing Land Uses

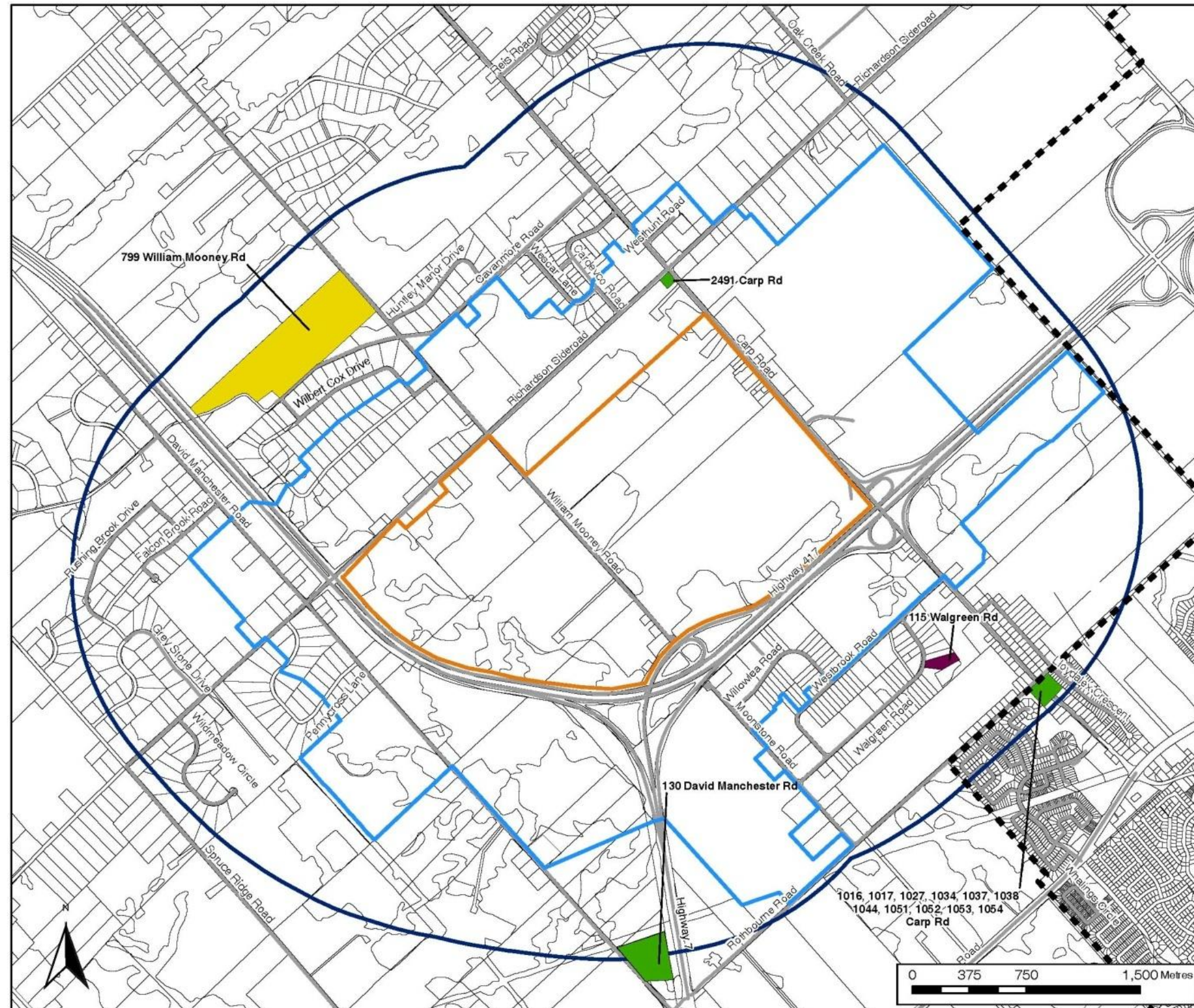


Existing land use data by City of Ottawa, 2005, modified by FoTenn Consultants Inc. in May 2011.  
 Note: Land uses beyond the Regional Study Area were updated in February 2009.



# Figure 3

## Development Activity



- On-Site Study Area
- Site-Vicinity Study Area
- Regional Study Area
- Urban Boundary
- Zoning By-law Amendment
- Plan of Subdivision
- Zoning By-law Amendment and Site Plan Control

Property Parcel data by Teranet, 2005, updated by FoTenn Consultants, May 2011